

Flascheguard

Fender Installation Guide

FLASCHEGUARD®
Recycled Watercooler Bottles

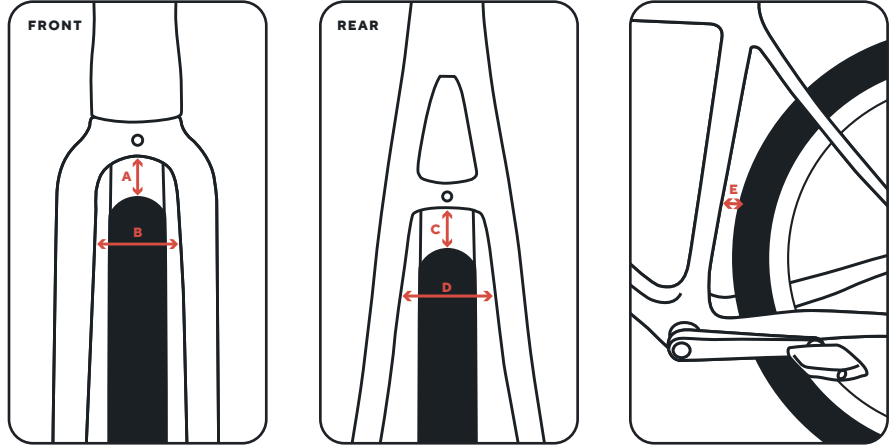


HARDWARE INCLUDED

- 6 x 12 mm Bolt
- 2 x 25 mm Bolt
- 1 x 45 mm Bolt
- 1 x 65 mm Bolt
- 2 x 12 mm Dome Head Bolt
- 2 x 16 mm Dome Head Bolt
- 2 x 25 mm Dome Head Bolt
- 3 x M5 Nylock Nut
- 10 x 12 mm Washers
- 6 x 5 mm Spacer
- 3 x 10 mm Spacer
- 1 x Rear Bracket
- Axlerunner Kit
 - 2 x Axlerunner Adapter
- Framerunner Kit
 - 2 x Framerunner Adapter
 - 2 x Protective Adhesive Strip
 - 2 x Small Rubber O-Rings
 - 2 x Large Rubber O-Rings
 - 4 x Zip Ties

CHECK YOUR CLEARANCE

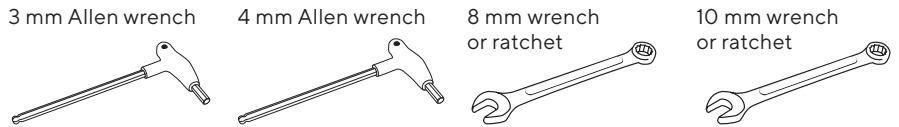
AVAILABLE SIZES: 700/41, 700/50, 700/60, 26/60, 27.5/70 & 29/70



Ideally, approx. 20mm of clearance is needed around the top of the tire and all the points at which it comes close to the frame or fork - fork crown, seatstay bridge, chainstay bridge and seat tube. (A, C, & E)

Widthwise, you'll need approximately the fender's width +5mm for optimal positioning. (B & D)

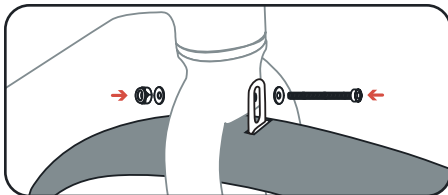
TOOLS REQUIRED



1 Front Fender Mounting

1A - TOP MOUNT

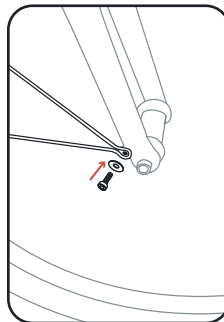
- Bolt the fender to the front of the fork crown using either the 45/65 mm bolt, a washer on each side, and a Nylock nut.
- Secure into position with the edge of the fender approximately 6 mm from the top of the tire



Note: Bolt length will depend on fork crown depth, excess bolt length can be trimmed if required.

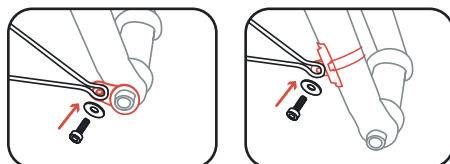
For bikes with Rim Brakes: The fender bracket should be sandwiched between the fork crown and brake caliper.

1B - MOUNTING THE STAYS



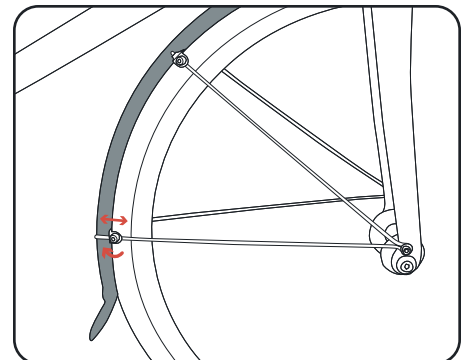
- Attach lower stays to fork dropout eyelets using 12 mm bolts and washers, being careful to ensure the end of the bolt doesn't contact the hub, spokes or brake caliper when fully tightened. Add additional spacers if more clearance required.

Note: For forks without fender mount eyelets, use the included Axlerunners for a quick-release wheel, or the Framerunners for thru-axes to create eyelets. Use adhesive 3M patches to protect paintwork prior to mounting.



1C - ADJUSTING THE STAYS

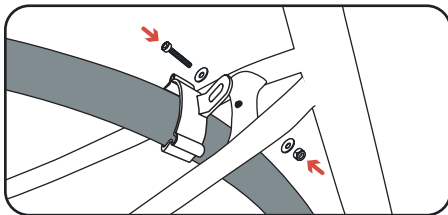
- Loosen the four pre-attached fender stay securing nuts and slide the fender to ensure there's at least 6 mm clearance between the tire and the edge of the fender.
- Once you're happy with the orientation and clearances, secure the placement by tightening the fender stay securing nuts.
- Spin the wheel to check the tire doesn't rub the fender, you may need to adjust the fork crown mount height to achieve optimal fit.
- Repeat these steps to adjust as necessary.



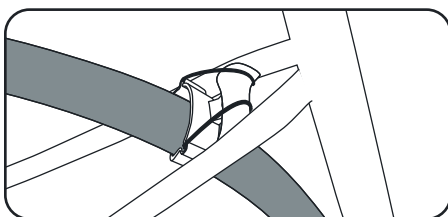
2 Rear Fender Mounting - Remove the rear wheel from your bike.

2A - TOP MOUNT

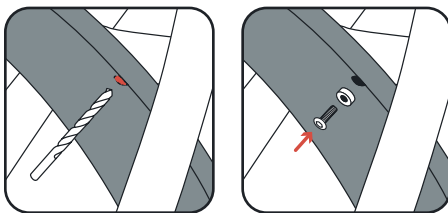
- Either slide or snap the rear fender bracket onto the fender.
- Secure the top of the fender with the bracket to the seatstays in one of the following ways:



OPTION 1 - Frame Eyelet: use a 12 mm bolt and washer.
For bikes with Rim Brakes: The fender bracket should be sandwiched between the seatstay bridge and brake caliper



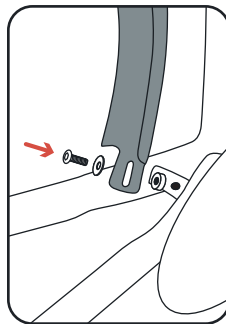
OPTION 2 - Frame without eyelets: the bracket can be fixed to either the seatstay bridge or seatstays with two zip-ties threaded through each of the in-moulded channels in the rear bracket.



OPTION 3 - Vertical eyelet: Line up the fender and mark carefully where the eyelet aligns with the fender in the correct position. Drill the fender using a 5 mm drill bit.

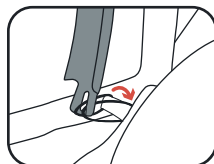
Use a dome head bolt and a combination of 5 or 10 mm plastic spacers to secure the fender and ensure it sits 10 mm from the top of the tire

2B - SECURE THE FENDER BASE

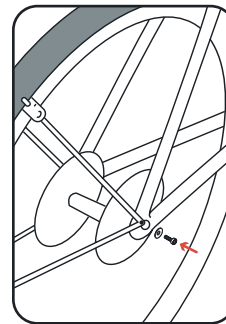


- Attach front of fender to chainstay bridge. If required, use plastic spacers to adjust tire clearance.

Option 2 - For a chainstay bridge without an eyelet, or no chainstay bridge at all, the fender can be fixed into position using zip-ties.

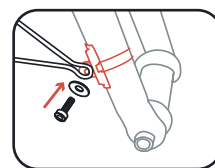
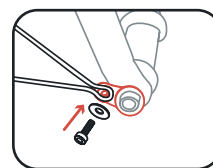


2C - MOUNTING THE STAYS



- Attach lower stays to fork dropout eyelets using 12 mm bolts and washers, being careful to ensure the end of the bolt doesn't contact the hub, spokes or brake caliper when fully tightened. Add additional spacers if more clearance is required.

Note: For bikes without fender mount eyelets, use the included Axlerunners for a quick-release wheel, or the Framerunners for thru-axles to create eyelets. Use adhesive 3M patches to protect paintwork prior to mounting.



2D - ADJUST THE STAYS

- See step 1C

3 Tighten all of your bolts and get ready to ride. Check out other products on axiomgear.com to get the gear that suits your lifestyle and go ride free!

WARNING Make sure the fender is correctly aligned with all mounting bolts tightened with sufficient tire and toe clearance prior to riding. Insufficient clearances may cause damage to your fender or bike and may cause bodily harm.

Periodically check all nuts and bolts for tightness.

WARRANTY & CUSTOMER SERVICE

Our entire product line is made from reclaimed and recycled materials. We ensure our products are ethically produced by trusted partners who are like family. Quality products with a lifetime warranty because product made to last means less waste.

For any questions and concerns you may have about your Axiom products, please contact us on our website at www.axiomgear.com/contact-us