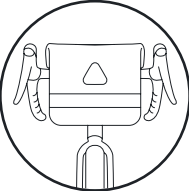


Monsoon

Handlebar Bag Installation

OCEANWEAVE®
Reclaimed Fishnet

axiom™
CYCLING GEAR



MONSOON OCEANWEAVE HANDLEBAR 9+

- Dimensions: 25 x 26 x 14 cm (9.8 x 10.2 x 5.5 in.)
- Weight: 570 g (1.26 lb.) with bracket
- Volume capacity: 9.1 L

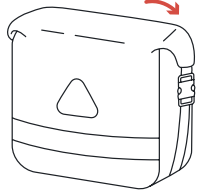
TOOLS REQUIRED



4 mm Allen wrench
Phillips screwdriver

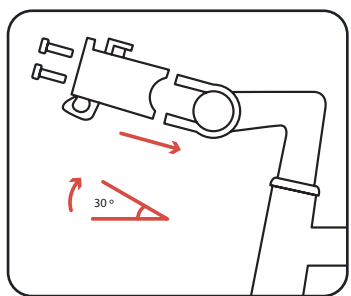
BAG CLOSURE

For optimal closure, roll the top of the bag down towards the back of the bag and handlebars before loping the strap underneath to secure. The roll should overlap as tightly as possible to ensure no opportunity for leakage or water penetration.

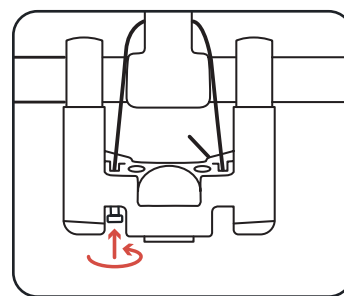


1 Clip two clamps fitting the diameter of the bars onto the handlebar. Slide the adapter body onto the clamps. Insert and lightly tighten the 4 screws.

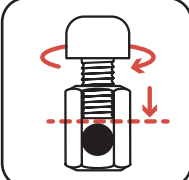
Be sure that the adapter is tilted upwards and leave enough space for brake and shifting cables.



6 Secure cable on one side by tightening the bolt inside the nut. Pull the other end downwards firmly and tighten the second bolt. Both bolts need to be firmly tightened (5 Nm).

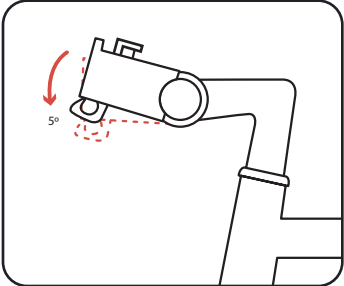


2



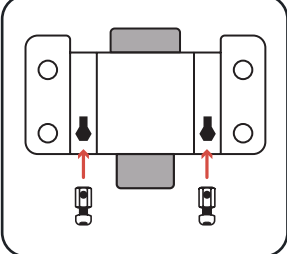
Unscrew the bolts from the nuts far enough so that the holes in the nuts are clear.

7



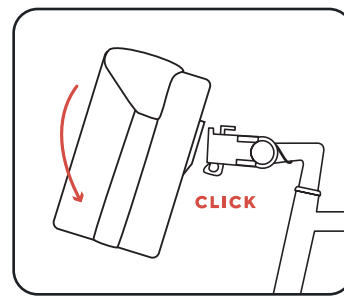
Push the adapter downwards until it is stopped by the cable. The adapter should be tilted upwards slightly. If necessary, loosen one bolt to adjust. Tighten the four black screws holding the clamps (1.5 Nm).

3

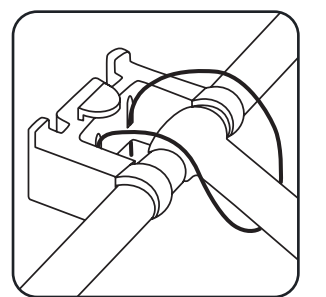


Insert the nuts into the adapter with the holes aligned vertically.

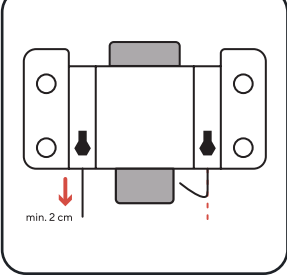
8 Click the bag onto the adapter and push downwards until it locks automatically. Press red button to release.



4 Position the security cable by feeding it under the stem, over the handlebar then into the back of the adapter and through the hole in each of the nuts.



5



min. 2 cm

Pull down the cable ends to equal length (min. 2cm) and bend them towards the center.

Note: The cable can be replaced by a regular brake cable Ø 2-2.2mm.

WARNING

Make sure the bag is firmly locked in the adapter before each ride. Remove the accessory before transporting the bike on a car rack. We advise against installation on carbon parts and recommend consulting the manufacturer. **Maximum load of the adapter is 7kg.**

WARRANTY & CUSTOMER SERVICE

Our entire product line is made from reclaimed and recycled materials. We ensure our products are ethically produced by trusted partners who are like family. Quality products with a lifetime warranty because product made to last means less waste.

For any questions and concerns you may have about your Axiom products, please contact us on our website at axiomgear.com/contact